

Research on Economy And Disability

A Study on Disability in a Socio-economic Context: toward a Unified Social Science

Funded by a grant from the Scientific Research Program (Creative Scientific Research), the Japan Society for the Promotion of Science



Australian Sign Language →
English → Japanese



Mr. Colin Allen (Board Member,
World Federation of the Deaf) at
the 14th Monthly Seminar of READ



Prof. FUKUSHIMA, Satoshi with
Finger Braille Interpreters



Captioning Group, "Ubiquitous"

Principal Investigator: Professor MATSUI, Akihiko

READ (Research on Economy and Disability), Graduate School of Economics, The University of Tokyo

Contact Address: 7-3-1, Hongo, Bunkyo-ku, Tokyo, 113-0033, JAPAN
e-mail: read@e.u-tokyo.ac.jp URL: <http://www.read-tu.jp/english/>

Welcome

In April 2007, our project “A study on disability in a socio-economic context: toward a unified social science” received a five-year grant from the Japan Society for the Promotion of Science (creative scientific research). The purpose of this project is to create a new scientific field of research on economy and disability.

Alfred Marshall, a giant in economics, once said that the purpose of economics is to increase the number of the leaders with “cool heads but warm hearts”. This phrase particularly goes well with our project. With this phrase in mind, the project members are determined to conduct research, aiming at the creation of a society for all. We would appreciate it if you could follow our project with warm but sharp eyes.



Professor MATSUI, Akihiko
Principal Investigator, READ
Game Theory, Research on Economy and Disability



● Monthly Seminar

Invited Speakers (order of date)

Michael STEIN Visiting Professor of Law, Harvard Law School

NAKAJIMA, Takanobu Senior Research Fellow, The Cabinet Office

AOKI, Masahiko Professor Emeritus, Stanford University

SUGINO, Akihiro Professor, Kwansei Gakuin University

TATEIWA, Shinya Professor, Ritsumeikan University

KYOGOKU, Takanobu

Director-General, National Institute of Population and Social Security Research

Colin ALLEN Board Member, World Federation of the Deaf

NAKANISHI, Shoji

Chairperson, Japan Council on Independent Living Centers



- Research on
- Economy
- And
- Disability

READ at Todai Forum

Recognized as a frontier of science, our project, research on economy and disability, has been selected as one of the three topics of Todai Forum 2009 held in the United Kingdom, the birthplace of disability studies. With our old and new friends and colleagues at Manchester Metropolitan University, the venue of Todai Forum, and other U.K. universities, we plan to present our latest works, hoping to contribute to an increase in the number of people with cool heads but warm hearts through which we can create a society for all.

- **Statistical Survey:**

Survey on the Economic and Social Conditions of Disabled People

- **Todai Forum in UK:**

Disability and Economy: Creating a Society for All,
Manchester Metropolitan University, April 2009

- **Lectures at The University of Tokyo:**

Disability Studies Courses at the Graduate School of Economics and
the College of Arts and Sciences

- **Support to Disability Services, The University of Tokyo**

- **Symposium in Hokkaido, Hakodate, August 2008**

Todai Forum 2009 Members (The University of Tokyo)



FUKUSHIMA, Satoshi: Professor,
Research Center for Advanced Science
and Technology
Disability Studies, Deafblind Persons and Communication



SAWADA Yasuyuki:
Associate Professor,
Graduate School of Economics
Development Economics



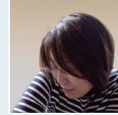
NAGASE, Osamu:
Project Associate Professor,
Graduate School of Economics
Disability Studies, Disability and Development



KURAMOTO, Tomoaki:
Project Lecturer,
Graduate School of Economics
Disability Studies, The Politics of Identity



HOSHIKA, Ryoji: Project Assistant
Professor, Research Center for
Advanced Science and Technology
Disability Studies, Sociology



IINO, Yuriko: Project Assistant
Professor, Research Center for
Advanced Science and Technology
Feminist Theory, Gender/Sexuality Studies



KAWAMURA, Machiko: Project Researcher,
Graduate School of Economics
*Cultural Psychology, Communication,
Disability Studies*



KAWASHIMA, Satoshi: Project Researcher,
Graduate School of Economics
*International Human Rights Law,
Disability Studies*



NISHIKURA, Miki: Project Researcher,
Graduate School of Economics
*Sociology, Research on the Social Consequences of
Facial Disfigurement*



SAKAHARA, Kiri:
Project Researcher,
Graduate School of Economics
Decision Theory, Economics



SATO, Takashi:
Project Researcher,
Graduate School of Economics
Decision Theory, Economics



SEKIGUCHI, Yohei:
Project Researcher,
Graduate School of Economics
Game Theory, Social Choice Theory



SEYAMA, Noriko:
Project Researcher,
Graduate School of Economics
Gender Studies, Sociology



USUI, Kumiko:
Project Researcher,
Graduate School of Economics
Disqualifying Clause on Disability, Gender

READ Project Members CO-INVESTIGATORS

II, Masako: Professor,
School of International and Public Policy,
Hitotsubashi University

ISHIKAWA, Ryuichiro: Assistant Professor,
Graduate School of Systems and Information
Engineering, University of Tsukuba

KANEKO, Yoshihiro: Director,
Department of Empirical Social Security Research,
National Institute of Population and Social Security Research

KAWAGOE, Toshiji: Associate Professor,
Department of Complex Systems, Future University-Hakodate

MORI, Soya: Deputy Director, Poverty Alleviation
and Social Development Studies Group,
Institute of Developing Economies, JETRO

MOROZUMI Ryoko: Associate Professor,
Faculty of Economics, Graduate School of Economics,
University of Toyama

NAGAE, Akira: Assistant Professor,
Waseda Institute for
Advanced Study, Waseda University

OKAZAKI, Tetsuji: Professor,
Graduate School of Economics,
The University of Tokyo

SHIMIZU, Takashi: Associate Professor,
Faculty of Economics, Kansai University

TANAKA, Emiko: Lecturer,
Department of Humanity and Science,
Tokyo Kasei University

TOHYAMA, Masayo: Assistant Professor,
College of Community & Human Services,
Rikkyo University

YAMASHITA, Mai: Associate Professor,
Faculty of Business Administration,
Kyoto Sangyo University